

*Dear Readers,*

Welcome to the Fall 2013 issue of *The Flow*. This quarter's theme features minimalism and form—glass art where the work is stripped down to its most fundamental parts. This style emphasizes an extreme simplification of design that takes it to a bare minimum of necessary elements. It also lends itself to the use of monochromatic palettes of primary colors or clear. I think we have some inspiring examples for you in the pages that follow.

The stunning work of Korean-born artist, Eunsuh Choi, provides a great example of how an artist can use mostly clear glass and simple cube shapes to fashion exquisite sculptures. Connecting the hollow cubes, one on top of another, she forms the frame for her simple, central figures, often trees or ladders that represent human hopes and dreams. We're glad to see that she is sharing her techniques with an abundance of students as she travels to various glass schools and venues as well as teaching at her private studio in Rochester, New York.

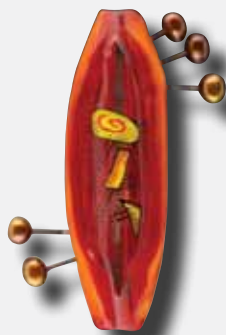
I think you'll enjoy trying your hand at one or hopefully all of the tutorials we have lined up for you. Takoda Madrona from Bern Glass brings us a surfer dude on his board riding a wave of blue and white frit. Wil shows us how to ensure symmetry when adding "horns" to decorate a disk, and Doug Zolbert shares his discovery for making micro tubulations using boro color rods. The tutorials come to a close with Jack Steele's human spine sculpture and Steve Sizelove's tips for shaping an elegant female figure.

We also hope you'll take advantage of our upcoming frameworking Webinars. On October 15, master artist and teacher Milon Townsend will demonstrate tips, tricks, and insights on how to add dichroic-coated glass to your artwork without burning it out. On November 5 and 7, Art Clay Silver artist Jackie Truty will show how to successfully combine fine silver with glass. Visit the Glass Expert Webinars™ link under "What's New" at [www.theflowmagazine.com](http://www.theflowmagazine.com) for more details plus local dates and times, then be sure to sign up. Webinars are great way to make your adventures in glass art more exciting than ever with no traveling required.

As always . . . Keep your light shining and your torches lit!

*Jennifer*

Jennifer Menzies  
Editor



Bead by Bronwen Heilman

#### Deadlines for Editorial Submission

<b>Spring 2014</b>	<b>Marine and Aquatic Themes</b>
Submission Deadline	December 1, 2013

<b>Summer 2014</b>	<b>Marbles and Paperweights</b>
Submission Deadline	March 1, 2014

If you are interested in becoming a contributing artist for *The Flow*, visit [www.theflowmagazine.com](http://www.theflowmagazine.com) for a link to themes of upcoming issues, author guidelines, and submission forms.

**Publisher** ~ Maureen James  
**Editor** ~ Jennifer Menzies  
**Founding Editor** ~ Wil Menzies  
**Copy Editor** ~ Darlene Welch  
**Accounting** ~ Rhonda Sewell  
**Circulation Manager** ~ Kathy Gentry  
**Advertising** ~ Maureen James  
**Graphic Artists** ~ Dave Burnett  
Mark Waterbury  
**Contributing Artists and Writers**  
Colleen Bryan, Marcie Davis  
Arnold Howard, Takoda Madrona  
Jennifer Menzies, William Menzies  
Salt, Sarah-Mae

Steve Sizelove, Jack Steele  
Darlene Welch, Doug Zolbert  
ISSN 74470-28780 is published quarterly

by Glass Patterns Quarterly, Inc.

POSTMASTER: Send address  
changes to The Flow,

P.O. Box 69, Westport, KY 40077

Telephone: 800-719-0769

502-222-5631

Facsimile: 502-222-4527

Website: [www.theflowmagazine.com](http://www.theflowmagazine.com)

E-Mail: [theflow@theflowmagazine.com](mailto:theflow@theflowmagazine.com)

[sales@theflowmagazine.com](mailto:sales@theflowmagazine.com)

[editor@theflowmagazine.com](mailto:editor@theflowmagazine.com)

Subscriptions: (4 issues)

\$28 for one year,

\$52 for two years, \$74 for three years,

Kentucky residents, add 6% state

sales tax. International Rate

\$48 one year, \$87 two years,

\$124 three years.

All subscriptions must be paid in U.S. dollars with an international money order or with a check drawn on a U.S. bank.

Periodicals Postage Paid

at Westport, KY 40077

and additional mailing offices.

Sample issues U.S. \$9, International \$13.

©2013 The Flow.

Editor and staff assume no responsibility for the claims of advertisers or their services, nor do we endorse any particular business. The articles reflect the views of the writer, not necessarily those of the magazine.

*The Flow* is not responsible for materials such as photographs and letters, and they will not be returned unless accompanied by a self-addressed, stamped envelope. All material will be presumed to be for publishing and is subject to editing unless otherwise indicated in writing.

*The Flow* urges its readers to proceed cautiously in respect to technical information or step-by-step articles. Always take proper safety precautions when working with glass.