

*Dear Readers,*

Spring is here once again, bringing with it fragrant blooms, plenty of sunshine, and evolving plans for vacation time. I hope your own plans include being involved in ways to improve your current glass art skills and learn some new techniques from artists who have gone before you. I have some great suggestions to get you started in the right direction.



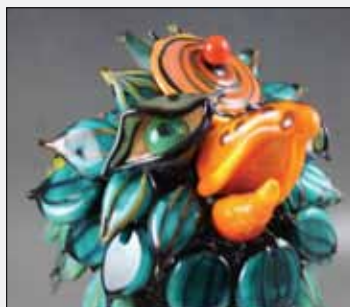
The 2013 Glass Craft & Bead Expo in Las Vegas, Nevada, is fast approaching, and we hope to see you there at Booth # 617. *The Flow* and its sister publications, *Glass Patterns Quarterly* and *Glass Art*, will once again be sponsoring the live demo stage. This is a great opportunity to watch renowned glass artists as they demonstrate the techniques that have made them famous. This stellar lineup includes: Dana Peters (Silver Syringe Hummingbird), Lisa St. Martin (Victorian Glass Flowers), Peggy Pettigrew Stewart (Verre Églomisé Techniques), Ryan Staub (Hot Shop Applications for Fused Glass), Jon Dean (Drop Drapes and Basket Making), Milon Townsend (Sculpting the Human Form), Margot Clark (Color Blending for Backgrounds and Abstracts), Jackie Truty (Creating Focal Beads and Elements with Moldable Glass), Erica Biery Collins (Stamp It, Fuse It, Use It) Streuters (Overview of No Days™ Product Line), Chris Geile of Boise Art Glass (Creating an Octopus), Sandi Undraitus (Decorative Stippling Soldering Made Easy), and David Alcala (Taking Fusion to a Higher Level).

For those of you who aren't able to take advantage of any live workshops this year, we have an answer for that, too. Glass Expert Webinars™ from GPQ provide a way for you to attend workshops on the Internet with renowned glass artists—no traveling required! Participants can ask the artist questions via live chat and receive answers in real time. Postworkshop DVDs are also available, the most recent one being the Lisa St. James seminar. Look for a link to more info on our home page at [www.theflowmagazine.com](http://www.theflowmagazine.com).

As always . . . keep your light shining and your torches lit.

*Jennifer*

Jennifer Menzies  
Editor



*Detail of work in progress  
by Sara Sally LaGrand*

#### **Deadlines for Editorial Submission**

**Fall 2013**                      **Minimalism and Form**  
Submission Deadline      June 1, 2013

**Winter 2013**                **9th Annual Women in Glass**  
Submission Deadline      September 1, 2013

If you are interested in becoming a contributing artist for *The Flow*, visit [www.theflowmagazine.com](http://www.theflowmagazine.com) for a link to themes of upcoming issues, author guidelines, and submission forms.

**Publisher** ~ Maureen James  
**Editor** ~ Jennifer Menzies  
**Founding Editor** ~ Wil Menzies  
**Copy Editor** ~ Darlene Welch  
**Accounting** ~ Rhonda Sewell  
**Circulation Manager** ~ Kathy Gentry  
**Circulation Assistants** ~ Joyce Harp  
Donna Gentry, Sherry Quaid  
**Advertising** ~ Maureen James  
**Graphic Artists** ~ Dave Burnett  
Mark Waterbury  
**Contributing Artists and Writers**  
Marcie Davis, Amy De Simone  
Adrienne V. Gennett, Arnold Howard  
Jennifer Menzies, Robert Mickelsen  
Paula Pennell, Hannah Rosner  
Staff of Sonoran Glass School  
Phil Sundling, Susan Walsh  
Wendy Williams, Darlene Welch  
ISSN 74470-28780 is published quarterly  
by Glass Patterns Quarterly, Inc.  
**POSTMASTER:** Send address  
changes to *The Flow*,  
P.O. Box 69, Westport, KY 40077  
Telephone: 800-719-0769  
502-222-5631  
Facsimile: 502-222-4527  
Website: [www.theflowmagazine.com](http://www.theflowmagazine.com)  
E-Mail: [theflow@theflowmagazine.com](mailto:theflow@theflowmagazine.com)  
[sales@theflowmagazine.com](mailto:sales@theflowmagazine.com)  
[editor@theflowmagazine.com](mailto:editor@theflowmagazine.com)  
Subscriptions: (4 issues)  
\$28 for one year,  
\$52 for two years, \$74 for three years,  
Kentucky residents, add 6% state  
sales tax. International Rate  
\$48 one year, \$87 two years,  
\$124 three years.  
All subscriptions must be paid in U.S. dollars with  
an international money order or  
with a check drawn on a U.S. bank.  
Periodicals Postage Paid  
at Westport, KY 40077  
and additional mailing offices.  
Sample issues U.S. \$9, International \$13.  
©2013 The Flow.  
Editor and staff assume no responsibility  
for the claims of advertisers or their services,  
nor do we endorse any particular business.  
The articles reflect the views of the writer, not  
necessarily those of the magazine.  
*The Flow* is not responsible for materials such  
as photographs and letters, and they will not be  
returned unless accompanied by a self-addressed,  
stamped envelope. All material will be presumed  
to be for publishing and is subject to editing unless  
otherwise indicated in writing.  
*The Flow* urges its readers to proceed cautiously in  
respect to technical information or  
step-by-step articles. Always take proper  
safety precautions when working with glass.